

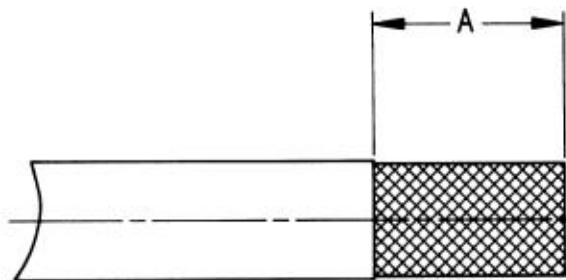


Séries
NSX

SIZE 1 COAXIAL CONTACT - WIRING INSTRUCTIONS

Issue:
12 JUNE 95

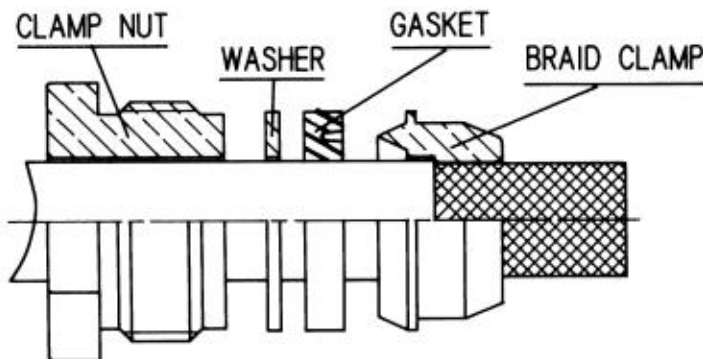
Page
1 / 1



STEP 1

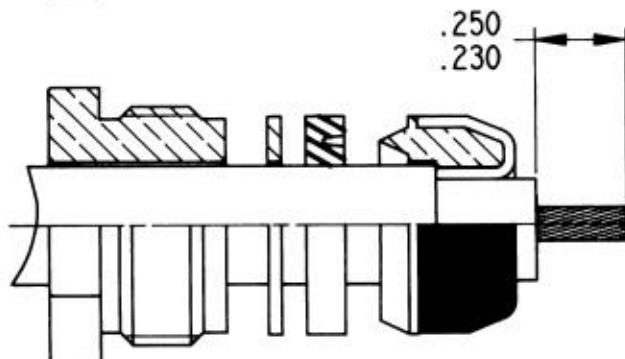
TO TRIM CABLE JACKET SEE TABLE

| CONTACT P/N | CABLE P/N | A |
|-------------|-----------|-----------|
| 620 101 | RG214 | .520/.500 |
| 620 101 001 | RG393 | |
| 620 001 | | |
| 620 101 002 | D2348-2 | .480/.460 |
| 620 102 | RAYCHEM | |
| 620 102 001 | 5012H3012 | |
| 620 002 | | |



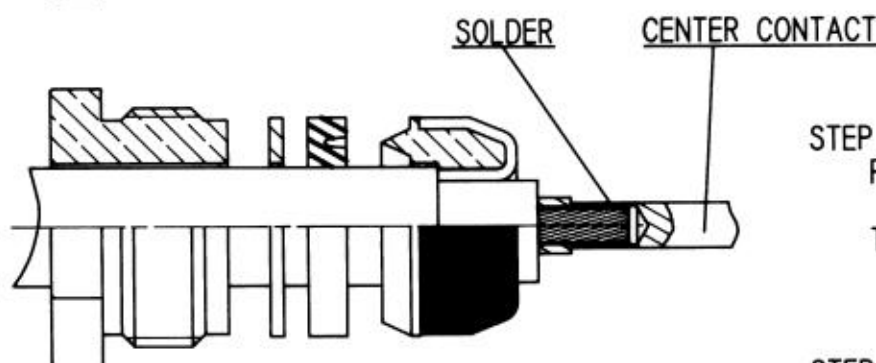
STEP 2

SLIDE CLAMP NUT, WASHER AND GASKET OVER CABLE JACKET
NEXT SLIDE BRAID CLAMP OVER THE BRAID UNTIL IT BUTTS UP
AGAINST CABLE JACKET



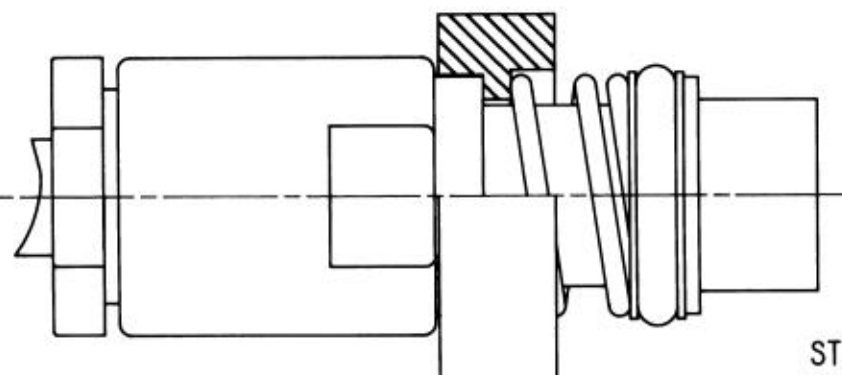
STEP 3

COMB BRAID UNTIL ALL STRANDS ARE STRAIGHT.
FOLD BACK THE BRAID OVER BRAID CLAMP
TRIM BRAID TO THE FRONT EDGE OF BRAID CLAMP SHOULDER
TRIM INNER CONDUCTOR AT DIMENSION SHOWN



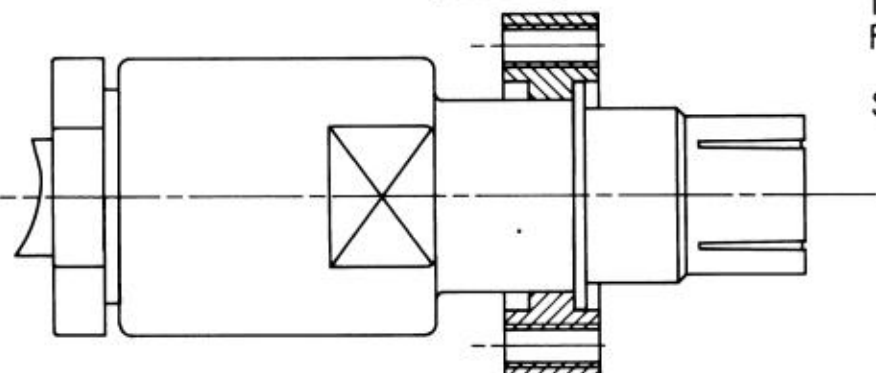
STEP 4

PLACE CENTER CONTACT OVER INNER CONDUCTOR UNTIL IT
BUTTS AGAINST DIELECTRIC
THEN SOLDER CENTER CONTACT



STEP 5 (WHEN COAXIAL SOCKET CONTACT)

INSTALL SOLDERED CONTACT AND BRAID CLAMP INTO OUTER CONTACT
FOLLOWED BY GASKET AND WASHER (MAKE SURE GASKET IS PROPERLY
SEATED WITH SHARP EDGE OF BRAID CLAMP)
SLIDE CLAMP NUT IN PLACE AND TIGHTEN WITH 45/55 IN LB TORQUE



STEP 5 (WHEN COAXIAL PIN CONTACT)

INSTALL SOLDERED CONTACT AND BRAID CLAMP INTO OUTER CONTACT
FOLLOWED BY GASKET AND WASHER (MAKE SURE GASKET IS PROPERLY
SEATED WITH SHARP EDGE OF BRAID CLAMP)
SLIDE CLAMP NUT IN PLACE AND TIGHTEN WITH 45/55 IN LB TORQUE

This information is given as an indication. In the continual goal to improve our products, we reserve the right to make any modifications judged necessary.

4112_9311

CREATION

PEN: .

NOM: L FALETTI

DATE: 12 FEB.93

APPR.:

| Issue | Revisions | Name | Approved |
|----------|-------------------------------------|-----------|-----------|
| 12 06 95 | ADDED 620001 AND 620002 P/N | MOKHTARI | BALDY/Nov |
| 23.04.93 | REDRAWN_ADDED CONTACT AND CABLE P/N | JP MACARI | |